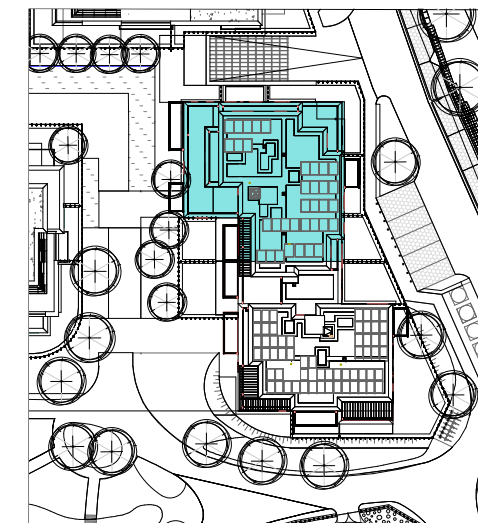
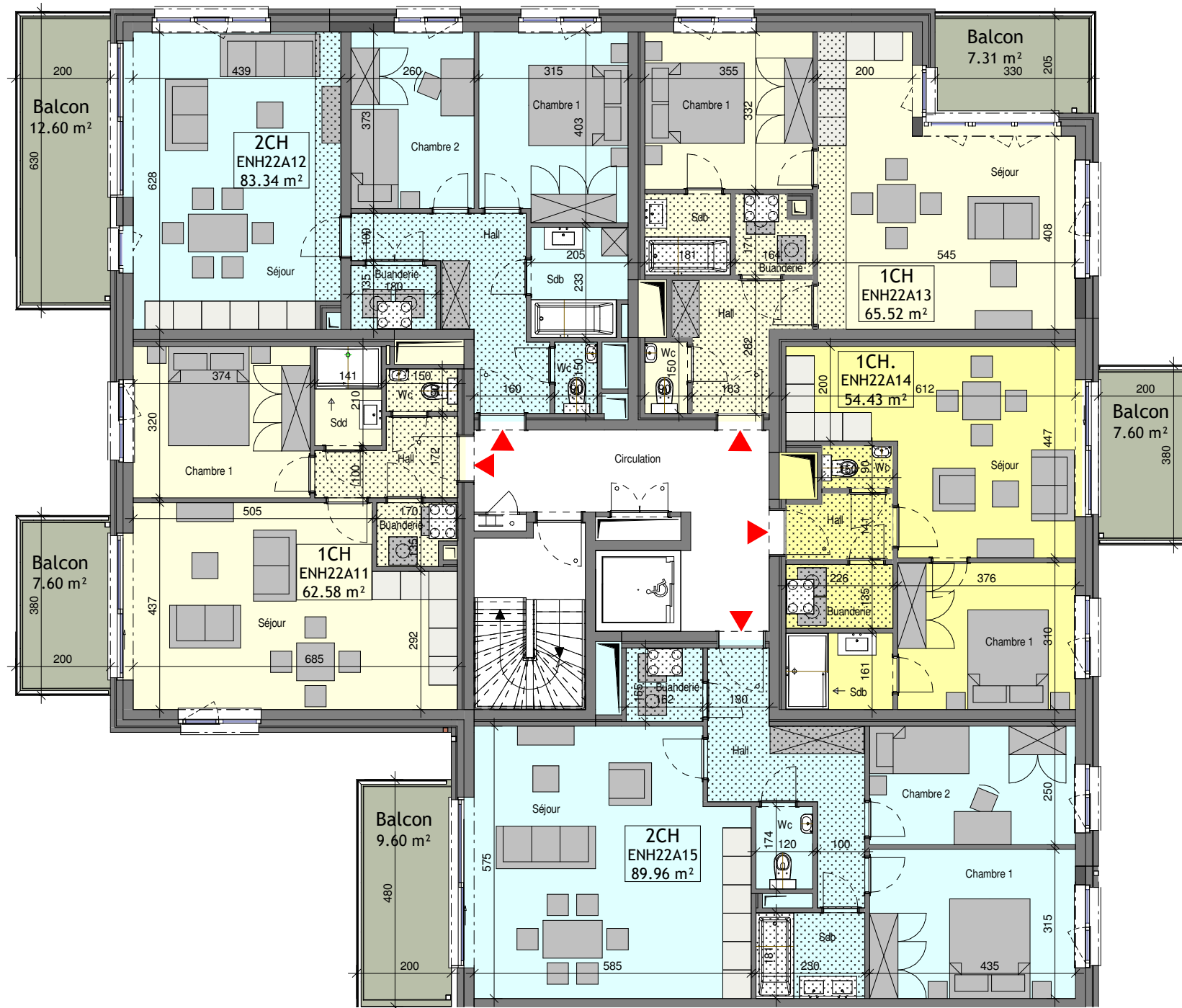
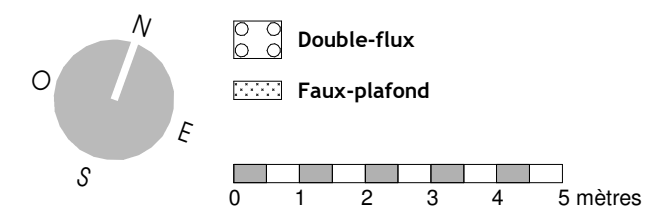


Unité	Nbre CH.	Surface (+/-m2)
ENH22A11	1CH	62.58 m ²
	Balcon	7.60 m ²
ENH22A12	2CH	83.34 m ²
	Balcon	12.60 m ²
ENH22A13	1CH	65.52 m ²
	Balcon	7.31 m ²
ENH22A14	1CH.	54.43 m ²
	Balcon	7.60 m ²
ENH22A15	2CH	89.96 m ²
	Balcon	9.60 m ²

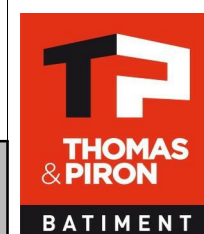


LEGENDE



Stade COM
06/07/23
Transmis

MAITRE DE L'OUVRAGE :
Thomas & Piron Bâtiment s.a.
5, Rue Fort d'Andoy - 5100 Wierde



Jambes - Parc d'Enhaive
BAT 2

INDICE

ECHELLE
1/115

FEUILLE
6 / 18

Bloc A - R+1

PLAN N°
ENH-2-AR-COM-110-A